



SPC · LVT · LOOSE LAY  
木纹(Wood) 石纹(Stone) 毯纹(Carpet)

# PVC FLOORING

LIVING WITH DESIGN.  
PVC 商用片材地板

# Company profile

LIVING WITH DESIGN.  
PVC 商用片材地板

## 浙江禾运科技有限公司

成立于2017年11月1日,位于浙江省海盐县澉浦镇六里工业区。“禾运”缘起于浙江第一古刹海盐金粟寺,寓意“风禾尽起,应运而生”,崇尚道法自然,诚信为本,勿忘初心,发扬新型微晶石环保地板事业造福于大众。

## 微晶石环保地板概念

以碳酸钙粉为主要原料,以树脂粉、内外滑剂、稳定剂为辅料,经压贴、挤出或涂敷工艺生产而成,有别于传统的木材地板、瓷砖地板等,具有绿色环保、轻薄便利、耐磨耐刮、防火防滑、防潮防蛀、吸音抗菌、循环使用等特性。

**公司第一阶段发展** 注册资金人民币1.6亿元,在岗员工约80人,并获得ISO9001体系认证, Floor Score 体系认证, Green Guard体系认证, CE认证等;主营微晶石环保地板的生产、销售与技术研发,目前产品主要销往北美、欧洲、澳洲及东南亚等地,各项评测指标皆达到国际领先标准。现有厂房面积约12000平方米,预计年产能近200万平方米。

**公司第二阶段发展** 总投资4.5亿元人民币,将于2020年9月竣工落地面积达100亩、总建筑面积达91745平方米的全新自动化厂房建设,配套花园、员工宿舍及一系列休闲娱乐设施。打造“理念超前、配套完善、技术领先”的禾运科技特色产业园。届时年产能将达到1000万平方米。



木纹系列  
WOOD SERIES

Thickness: 2.0mm-7.0mm  
Wear Layer: 0.2/0.3/0.55/0.7mm



HYW-21013



HYW-21006

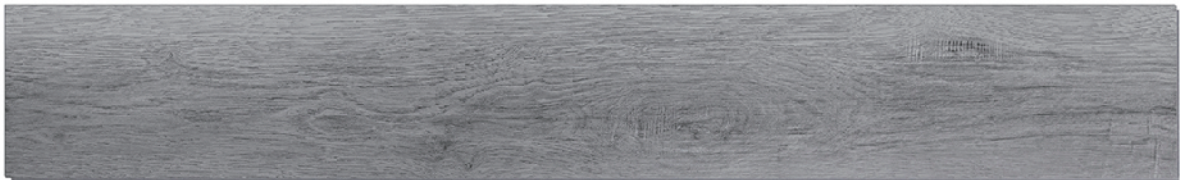


木纹系列  
WOOD SERIES

Thickness: 2.0mm-7.0mm  
Wear Layer: 0.2/0.3/0.55/0.7mm



HYW-21001

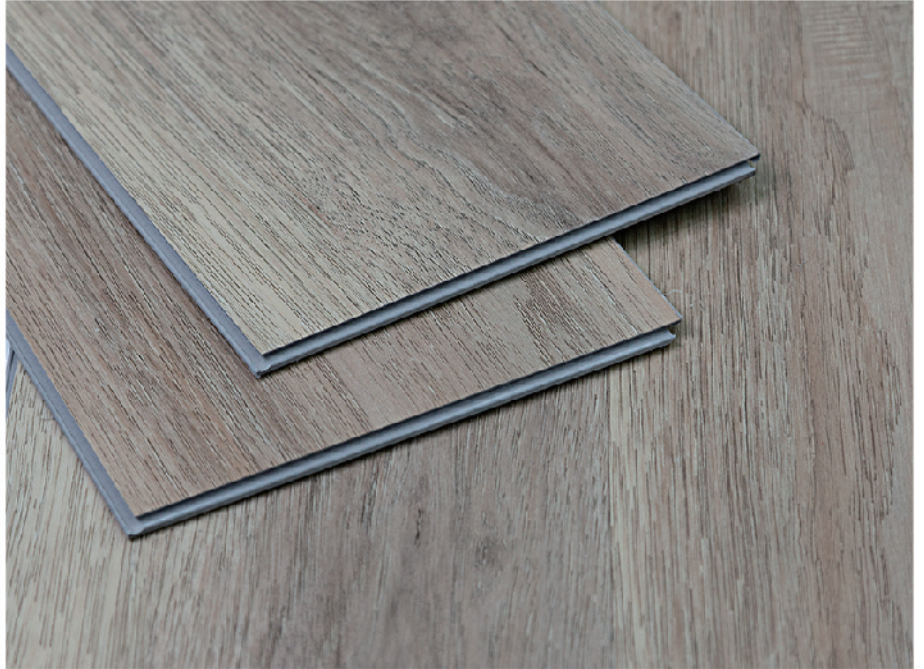


HYW-21007

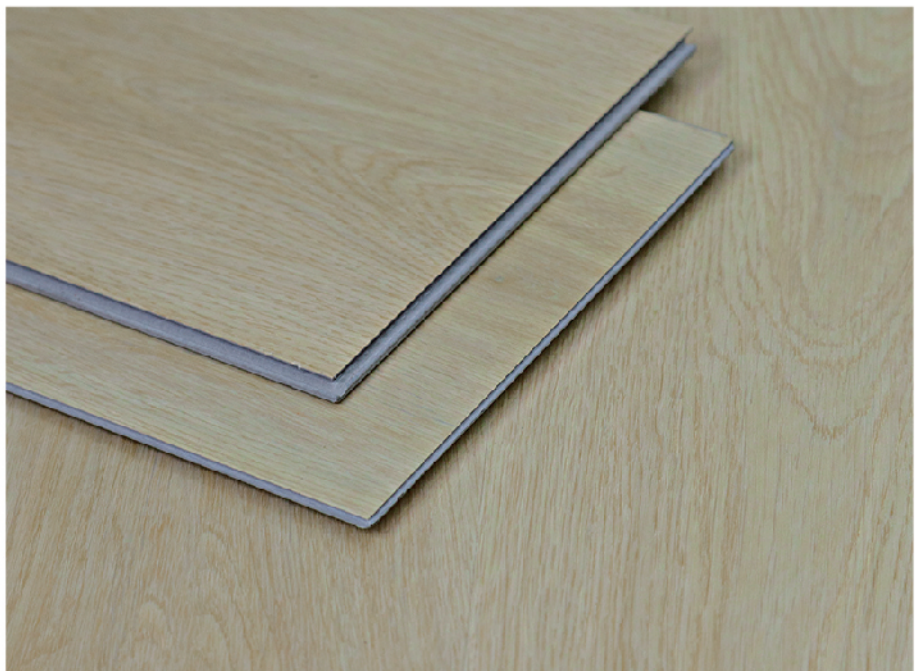


木纹系列  
WOOD SERIES

Thickness: 2.0mm-7.0mm  
Wear Layer: 0.2/0.3/0.55/0.7mm



HYW-21004



HYW-21011

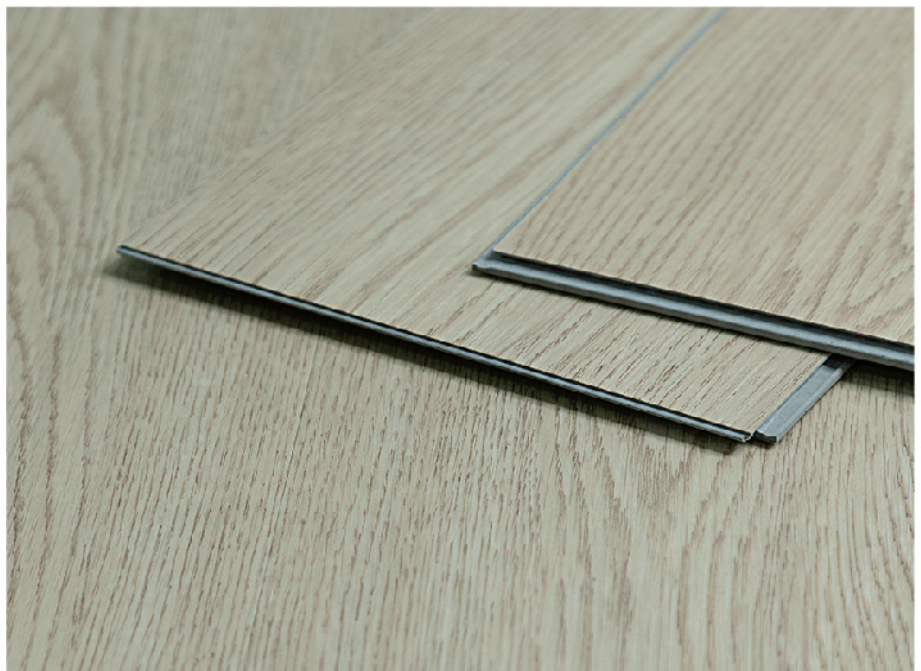


木纹系列  
WOOD SERIES

Thickness: 2.0mm-7.0mm  
Wear Layer: 0.2/0.3/0.55/0.7mm



HYW-21002

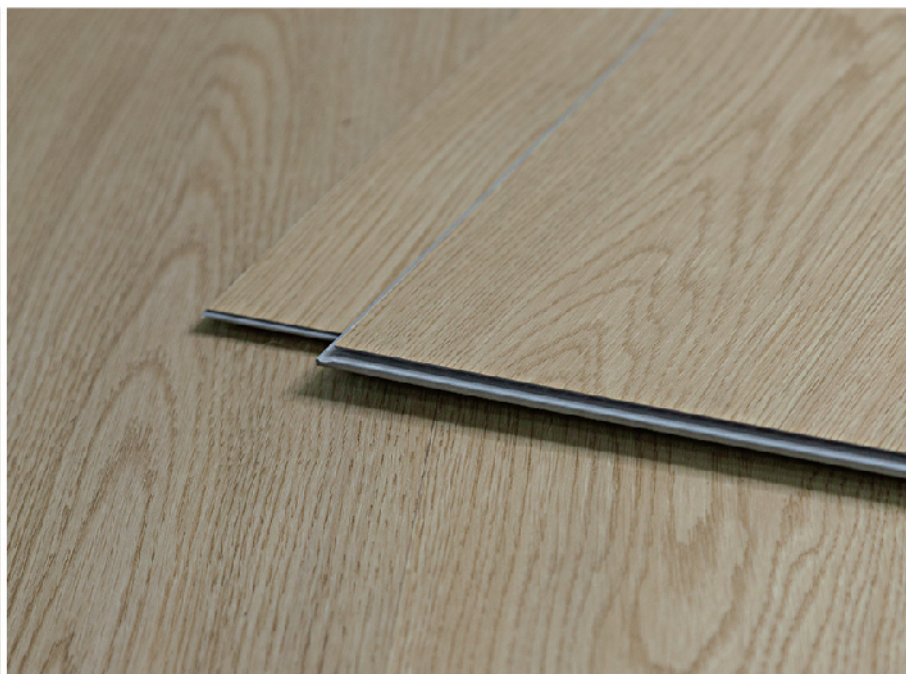


HYW-21003



木纹系列  
WOOD SERIES

Thickness: 2.0mm-7.0mm  
Wear Layer: 0.2/0.3/0.55/0.7mm



HYW-21012



HYW-21004

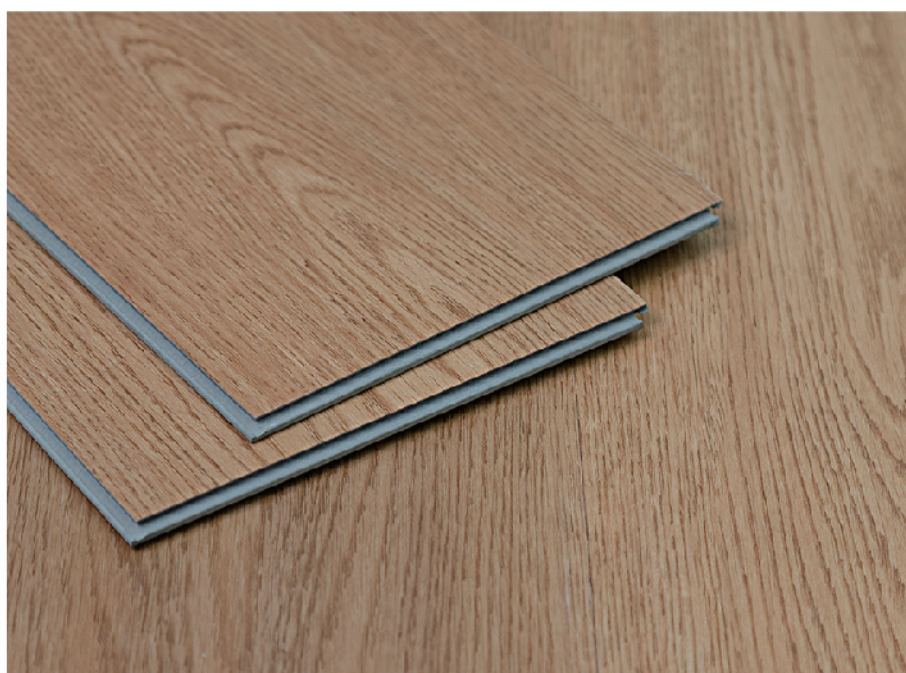


木纹系列  
WOOD SERIES

Thickness: 2.0mm-7.0mm  
Wear Layer: 0.2/0.3/0.55/0.7mm



HYW-21009

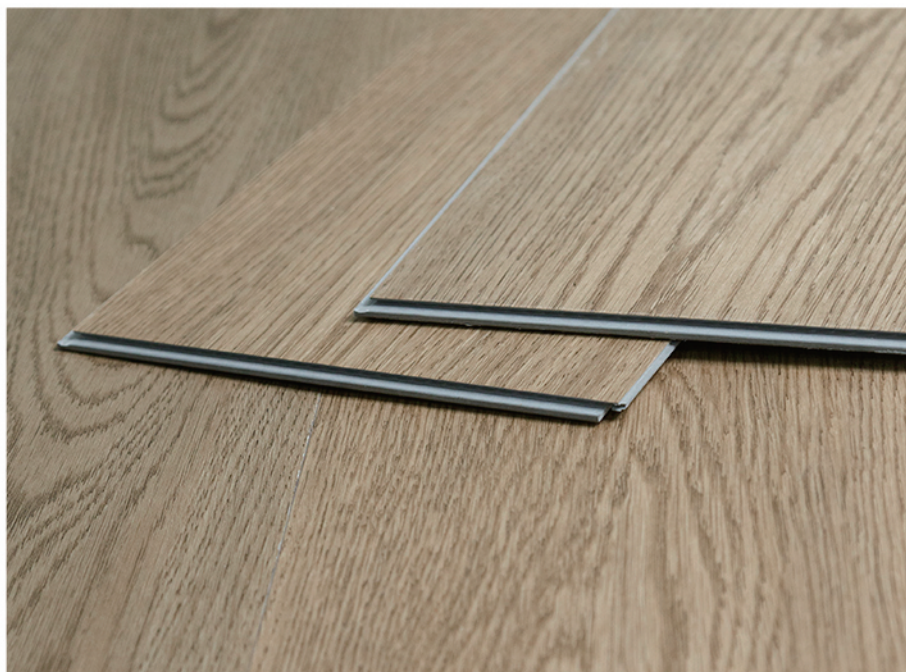


HYW-21008

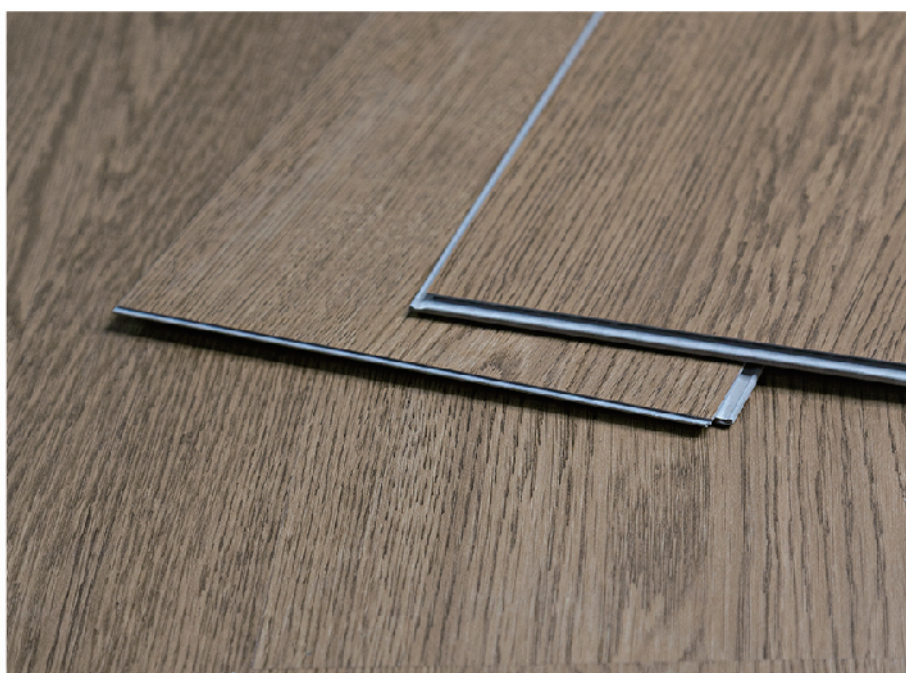


木纹系列  
WOOD SERIES

Thickness: 2.0mm-7.0mm  
Wear Layer: 0.2/0.3/0.55/0.7mm



HYW-21005

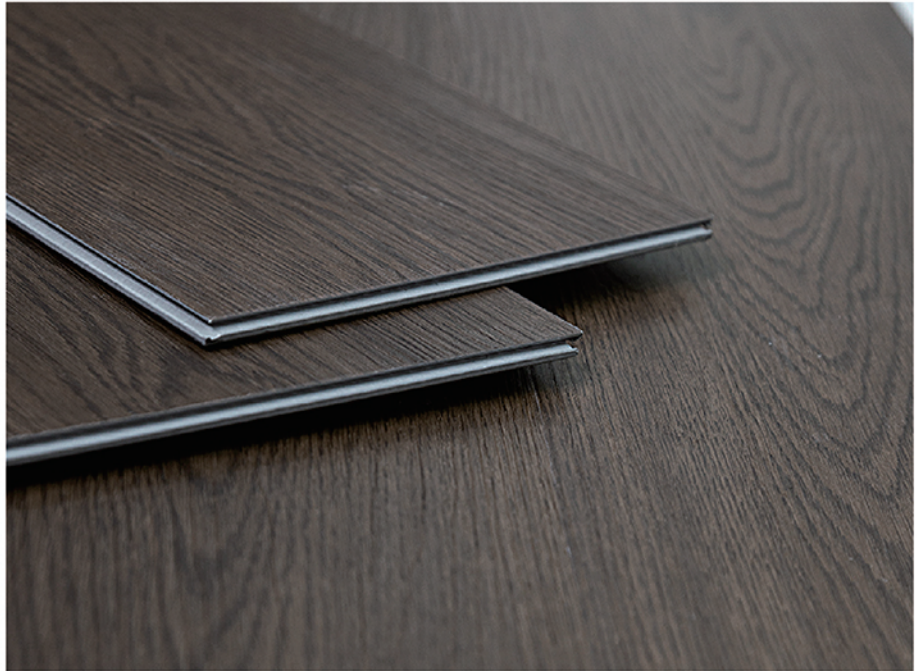


HYW-21014



木纹系列  
WOOD SERIES

Thickness: 2.0mm-7.0mm  
Wear Layer: 0.2/0.3/0.55/0.7mm



HYW-21003



HYW-21010



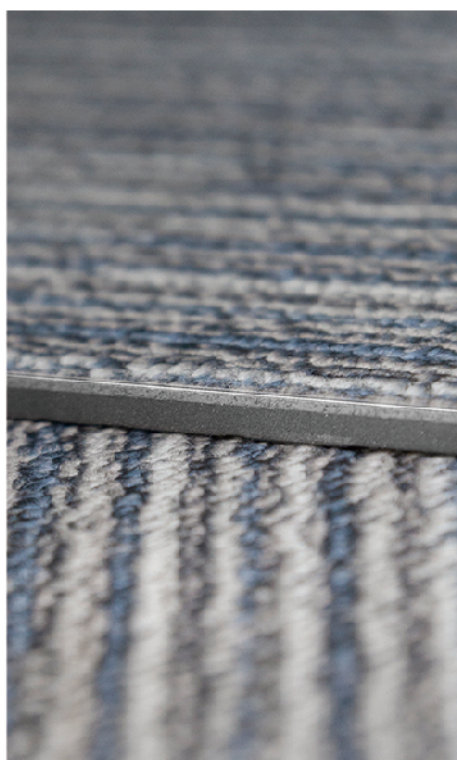
毯纹系列      Thickness: 2.0mm-7.0mm  
CARPET SERIES      Wear Layer: 0.2/0.3/0.55/0.7mm



HYT-21025



HYT-21023





毯纹系列  
CARPET SERIES

Thickness: 2.0mm-7.0mm

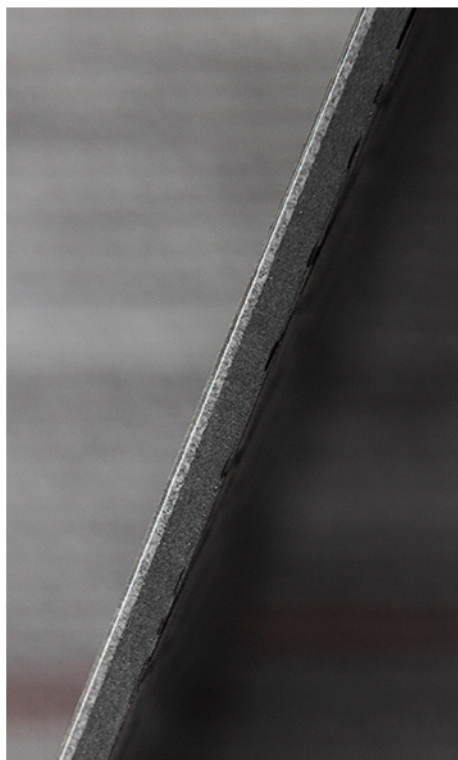
Wear Layer: 0.2/0.3/0.55/0.7mm



HYT-21022



HYT-21024





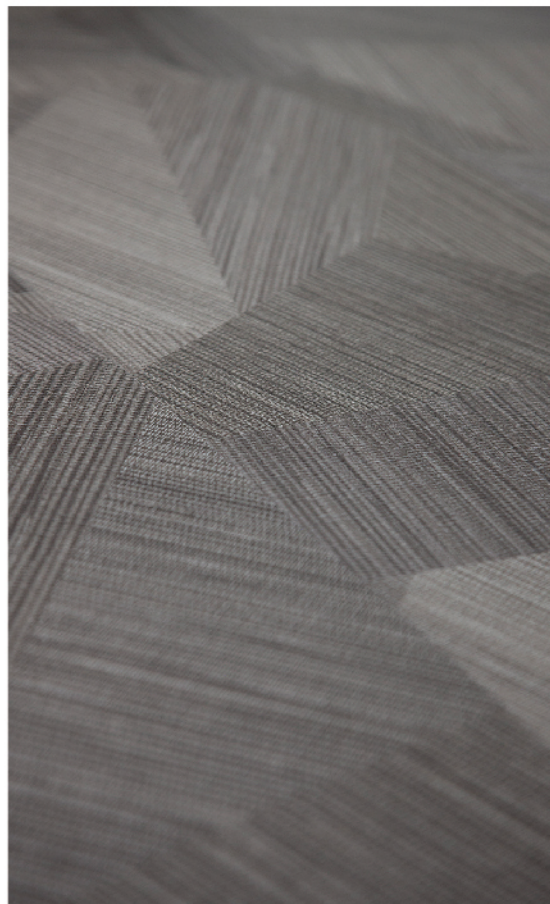
毯纹系列  
CARPET SERIES

Thickness: 2.0mm-7.0mm

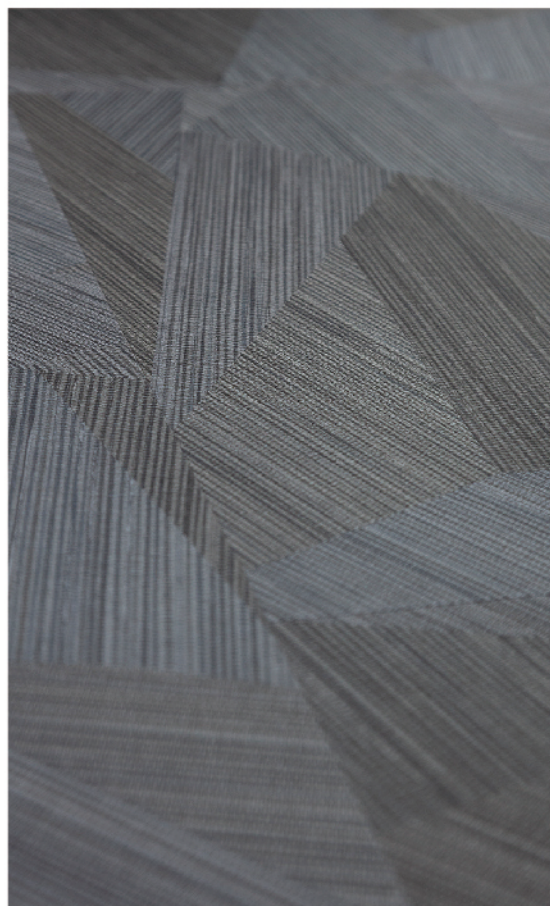
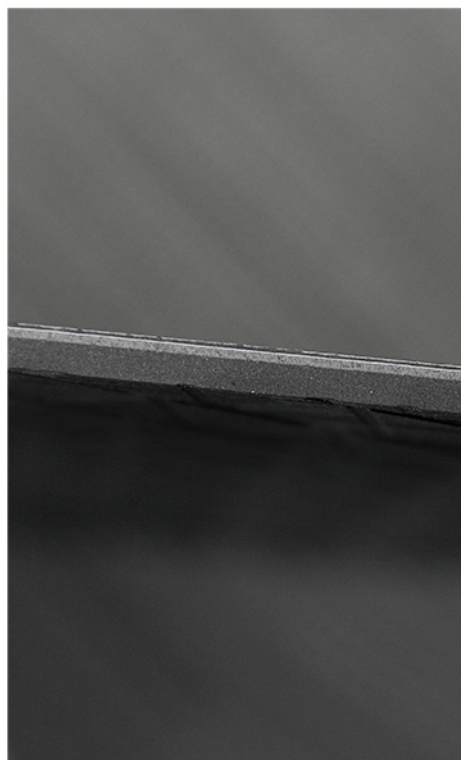
Wear Layer: 0.2/0.3/0.55/0.7mm



HYT21026



HYT-21031





石纹系列  
STONE SERIES

Thickness: 2.0mm-7.0mm  
Wear Layer: 0.2/0.3/0.55/0.7mm



HYS-21017



HYS-21019



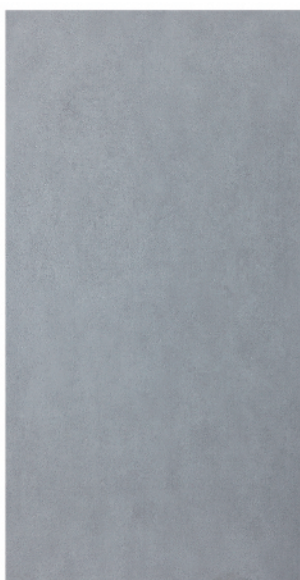
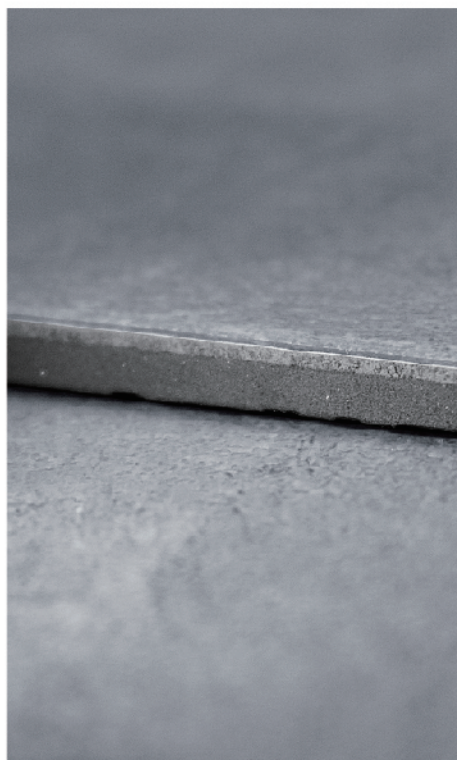


石纹系列  
STONE SERIES

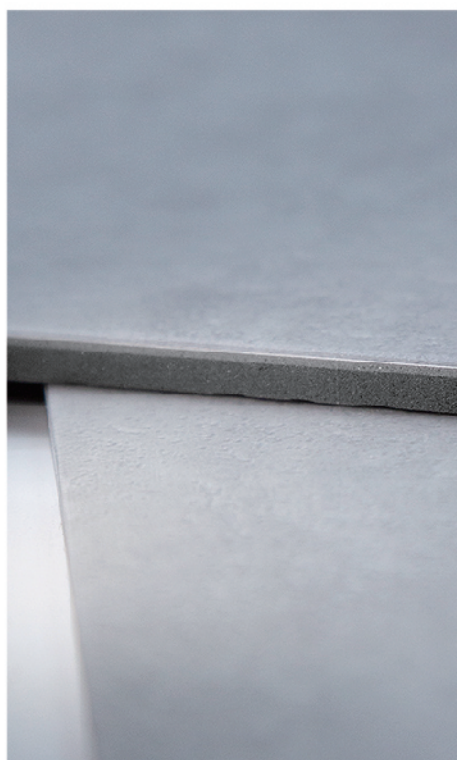
Thickness: 2.0mm-7.0mm  
Wear Layer: 0.2/0.3/0.55/0.7mm



HYS-21018



HYS-21016





石纹系列  
STONE SERIES

Thickness: 2.0mm-7.0mm  
Wear Layer: 0.2/0.3/0.55/0.7mm



HYS-21020



HYS-21021

